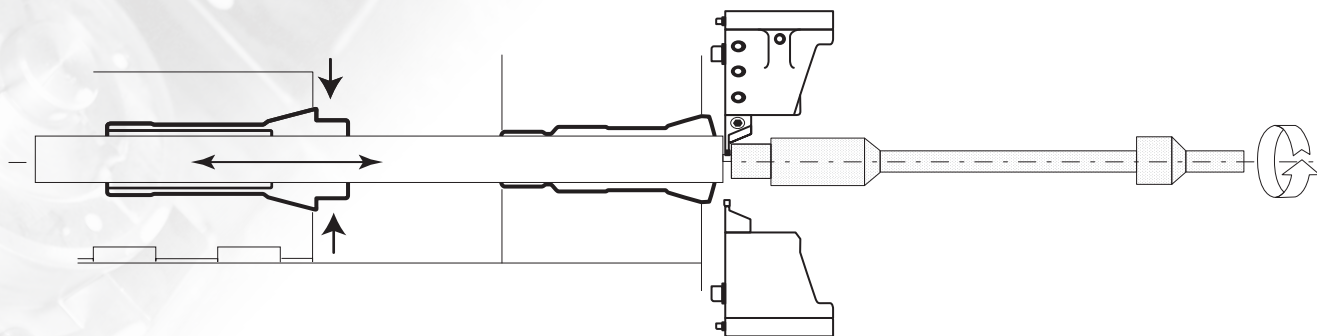


# MANURHIN K'MX NEWSLETTER

Innovative technology

## WHY SWISS-TYPE AUTOMATIC LATHE? EXAMPLES OF CYCLE TIMES.



Dear customers,

For those of you, who have not considered or do not have swiss automatic machines until now and do turning operations on ordinary turret CNC lathes we are pleased to bring to you information about the advantages of these machines over ordinary turret CNC lathes.

- 1** The part contour can be turned on one feed (it is not necessary to divide it into multiple cuts or cutting passes) So you program only one path from A to B.
- 2** Quick tool change (chip - to -chip times can be less than 1 second)
- 3** Turning more parts than one can be done in sequence in one clamping.
- 4** No need to stop the spindle when feeding the material for the next part or parts.

It results in higher productivity.

In the enclosure you will find **examples of machining different parts of different shapes for each separate MANURHIN K'MX models.**

Machines differ by maximum bar capacity through the spindle and maximum number of tools in the cut at one time (up to four)

The cycle times have been calculated for different materials and the priority was not the fastest part time, but the life of tools.

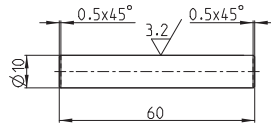
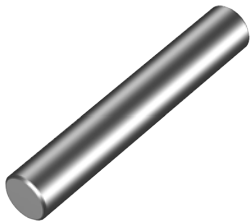
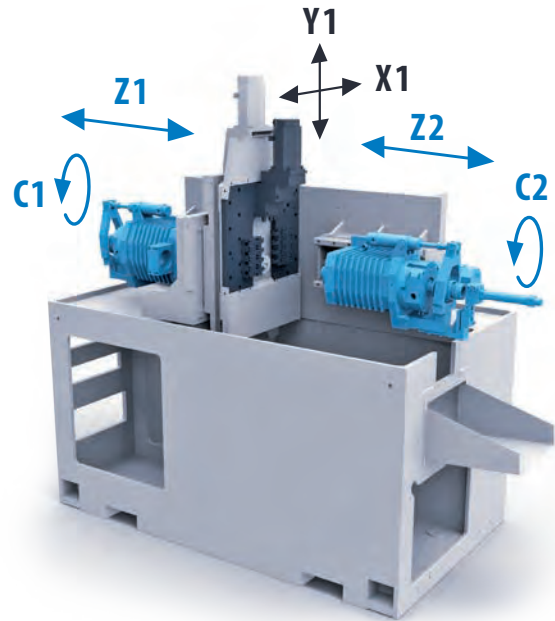
Send us your drawings of your parts and we will provide you with the best suitable machine and the optimal cycle times.

**MANURHINK'MX**<sup>®</sup>

Tomas Dederle  
Director of division MANURHIN K'MX  
TAJMAC-ZPS a. s. Zlín  
tel.: 00420 728 645 242  
e-mail: [tdederle@tajmac-zps.cz](mailto:tdederle@tajmac-zps.cz)

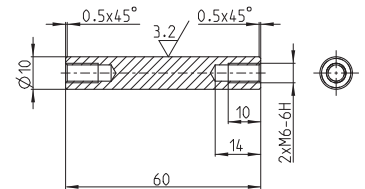
# MANURHIN K'MX 413

Innovative technology



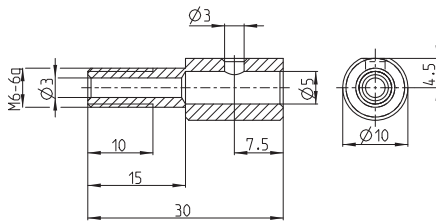
MANURHIN K'MX 413

Aluminium EN AW 6061	Brass CuZn39Pb3	Automatic steel 1.0737	Stainless steel 1.4301
14 sec.	15 sec.	16 sec.	22 sec.



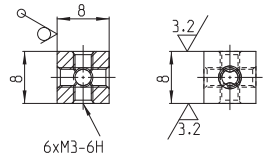
MANURHIN K'MX 413

Aluminium EN AW 6061	Brass CuZn39Pb3	Automatic steel 1.0737	Stainless steel 1.4301
23 sec.	25 sec.	28 sec.	42 sec.



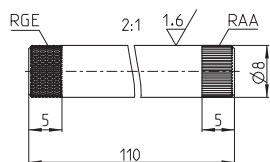
MANURHIN K'MX 413

Aluminium EN AW 6061	Brass CuZn39Pb3	Automatic steel 1.0737	Stainless steel 1.4301
31 sec.	32 sec.	35 sec.	50 sec.



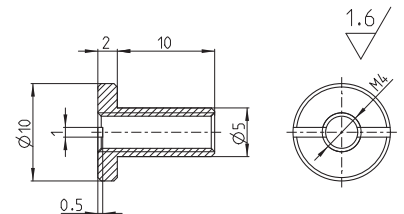
MANURHIN K'MX 413

Aluminium EN AW 6061	Brass CuZn39Pb3	Automatic steel 1.0737	Stainless steel 1.4301
38 sec.	40 sec.	46 sec.	60 sec.



MANURHIN K'MX 413

Aluminium EN AW 6061	Brass CuZn39Pb3	Automatic steel 1.0737	Stainless steel 1.4301
30 sec.	32 sec.	35 sec.	47 sec.



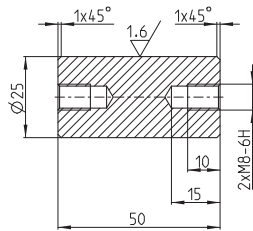
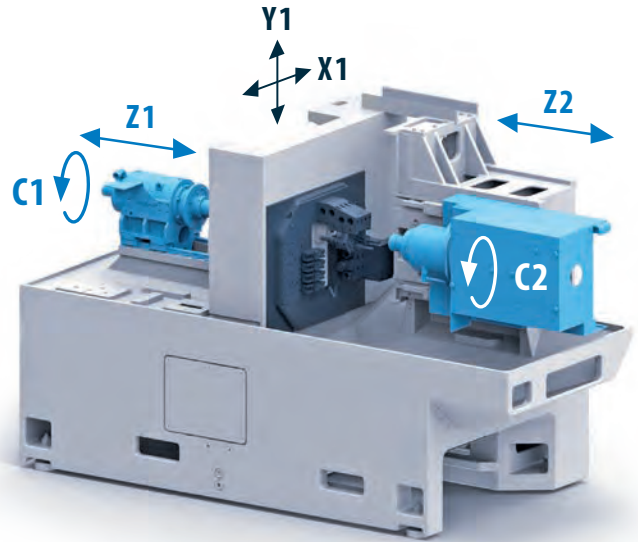
MANURHIN K'MX 413

Aluminium EN AW 6061	Brass CuZn39Pb3	Automatic steel 1.0737	Stainless steel 1.4301
24 sec.	25 sec.	27 sec.	35 sec.

Cycle time is calculated for standard cutting tools, without any special technology, without high pressure coolant and primary with focus on optimal longevity of used cutting tools.

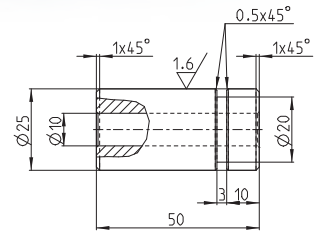
# MANURHIN K'MX 432

Innovative technology



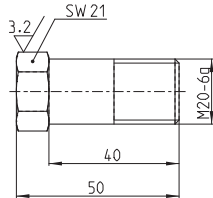
MANURHIN K'MX 432

Aluminium EN AW 6061	Brass CuZn39Pb3	Automatic steel 1.0737	Stainless steel 1.4301
33 sec.	38 sec.	44 sec.	64 sec.



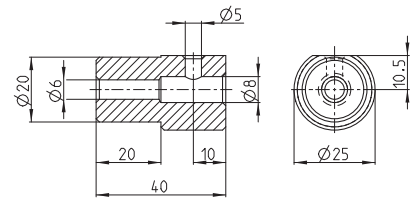
MANURHIN K'MX 432

Aluminium EN AW 6061	Brass CuZn39Pb3	Automatic steel 1.0737	Stainless steel 1.4301
40 sec.	46 sec.	54 sec.	76 sec.



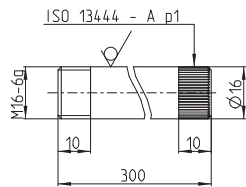
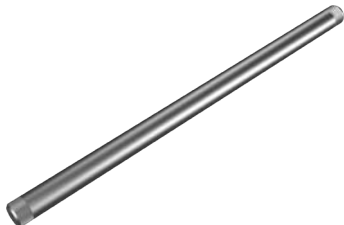
MANURHIN K'MX 432

Aluminium EN AW 6061	Brass CuZn39Pb3	Automatic steel 1.0737	Stainless steel 1.4301
54 sec.	59 sec.	66 sec.	90 sec.



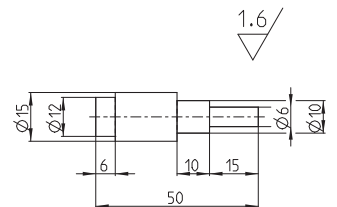
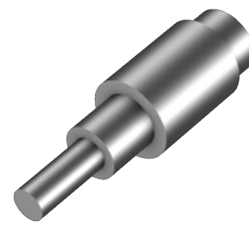
MANURHIN K'MX 432

Aluminium EN AW 6061	Brass CuZn39Pb3	Automatic steel 1.0737	Stainless steel 1.4301
46 sec.	51 sec.	59 sec.	82 sec.



MANURHIN K'MX 432

Aluminium EN AW 6061	Brass CuZn39Pb3	Automatic steel 1.0737	Stainless steel 1.4301
33 sec.	36 sec.	41 sec.	51 sec.



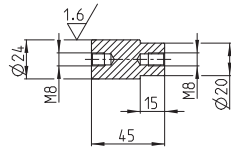
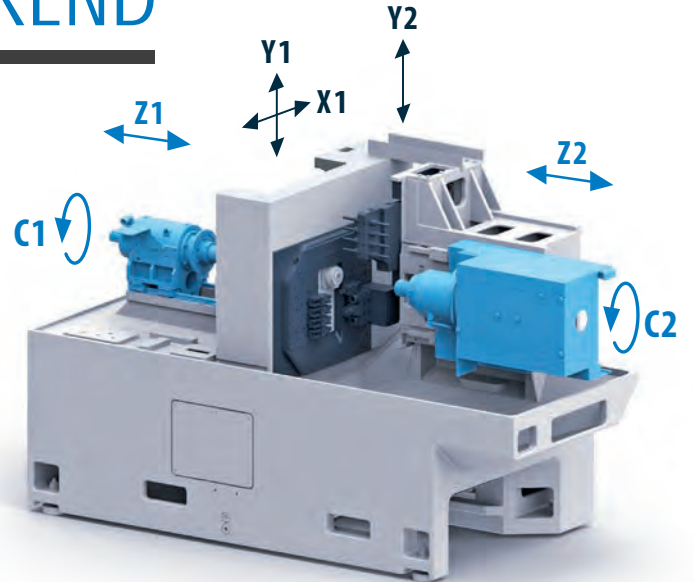
MANURHIN K'MX 432

Aluminium EN AW 6061	Brass CuZn39Pb3	Automatic steel 1.0737	Stainless steel 1.4301
20 sec.	21 sec.	23 sec.	32 sec.

Cycle time is calculated for standard cutting tools, without any special technology, without high pressure coolant and primary with focus on optimal longevity of used cutting tools.

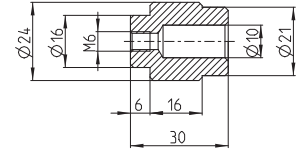
# MANURHIN K'MX 532TREND

Innovative technology



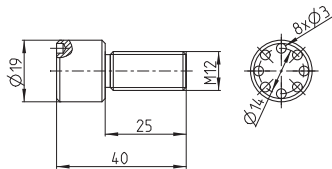
MANURHIN K'MX 532TREND

Aluminium EN AW 6061	Brass CuZn39Pb3	Automatic steel 1.0737	Stainless steel 1.4301
25 sec.	28 sec.	32 sec.	47 sec.



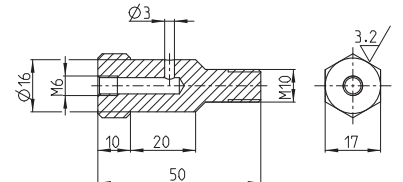
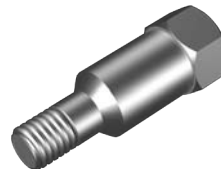
MANURHIN K'MX 532TREND

Aluminium EN AW 6061	Brass CuZn39Pb3	Automatic steel 1.0737	Stainless steel 1.4301
22 sec.	24 sec.	29 sec.	45 sec.



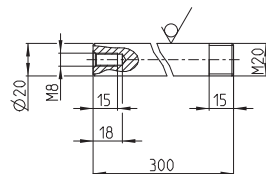
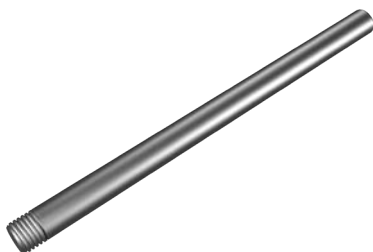
MANURHIN K'MX 532TREND

Aluminium EN AW 6061	Brass CuZn39Pb3	Automatic steel 1.0737	Stainless steel 1.4301
27 sec.	30 sec.	35 sec.	47 sec.



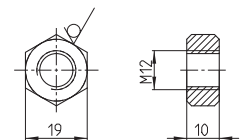
MANURHIN K'MX 532TREND

Aluminium EN AW 6061	Brass CuZn39Pb3	Automatic steel 1.0737	Stainless steel 1.4301
55 sec.	57 sec.	66 sec.	106 sec.



MANURHIN K'MX 532TREND

Aluminium EN AW 6061	Brass CuZn39Pb3	Automatic steel 1.0737	Stainless steel 1.4301
28 sec.	31 sec.	34 sec.	43 sec.



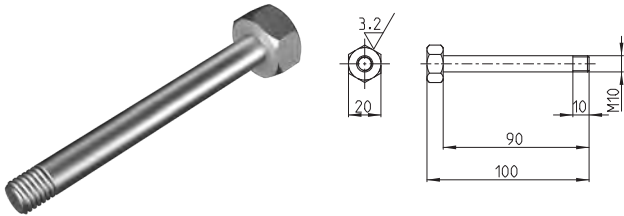
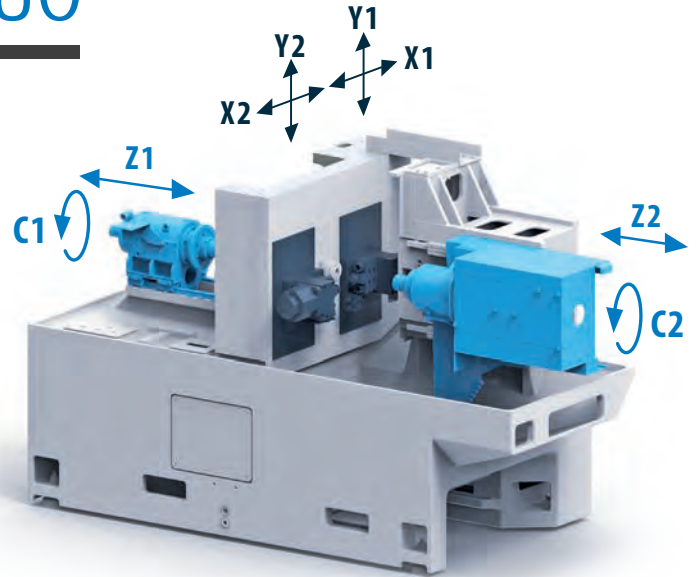
MANURHIN K'MX 532TREND

Aluminium EN AW 6061	Brass CuZn39Pb3	Automatic steel 1.0737	Stainless steel 1.4301
22 sec.	24 sec.	27 sec.	37 sec.

Cycle time is calculated for standard cutting tools, without any special technology, without high pressure coolant and primary with focus on optimal longevity of used cutting tools.

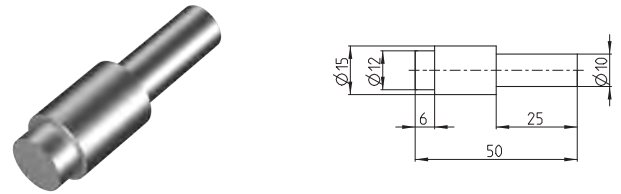
# MANURHIN K'MX 632DUO

Innovative technology



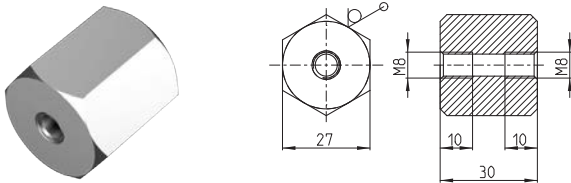
MANURHIN K'MX 632DUO

Aluminium EN AW 6061	Brass CuZn39Pb3	Automatic steel 1.0737	Stainless steel 1.4301
48 sec.	51 sec.	67 sec.	100 sec.



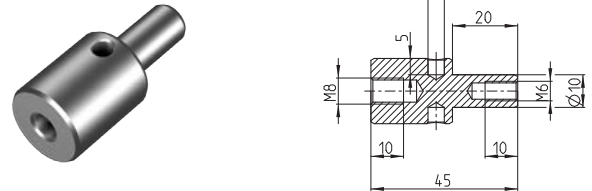
MANURHIN K'MX 632DUO

Aluminium EN AW 6061	Brass CuZn39Pb3	Automatic steel 1.0737	Stainless steel 1.4301
16 sec.	17 sec.	21 sec.	35 sec.



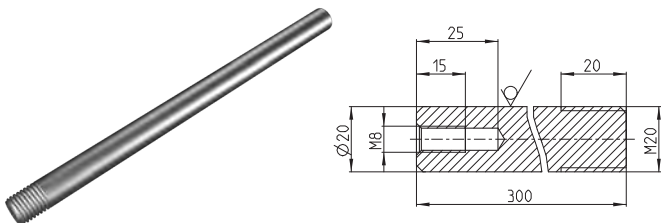
MANURHIN K'MX 632DUO

Aluminium EN AW 6061	Brass CuZn39Pb3	Automatic steel 1.0737	Stainless steel 1.4301
24 sec.	25 sec.	30 sec.	47 sec.



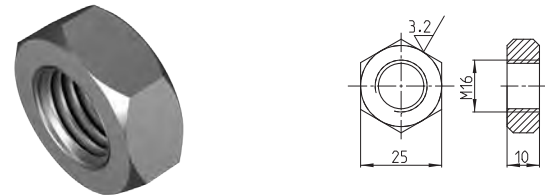
MANURHIN K'MX 632DUO

Aluminium EN AW 6061	Brass CuZn39Pb3	Automatic steel 1.0737	Stainless steel 1.4301
31 sec.	32 sec.	36 sec.	63 sec.



MANURHIN K'MX 632DUO

Aluminium EN AW 6061	Brass CuZn39Pb3	Automatic steel 1.0737	Stainless steel 1.4301
31 sec.	32 sec.	35 sec.	49 sec.



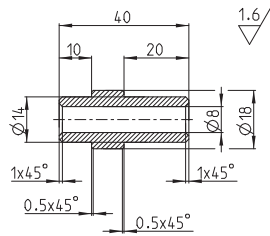
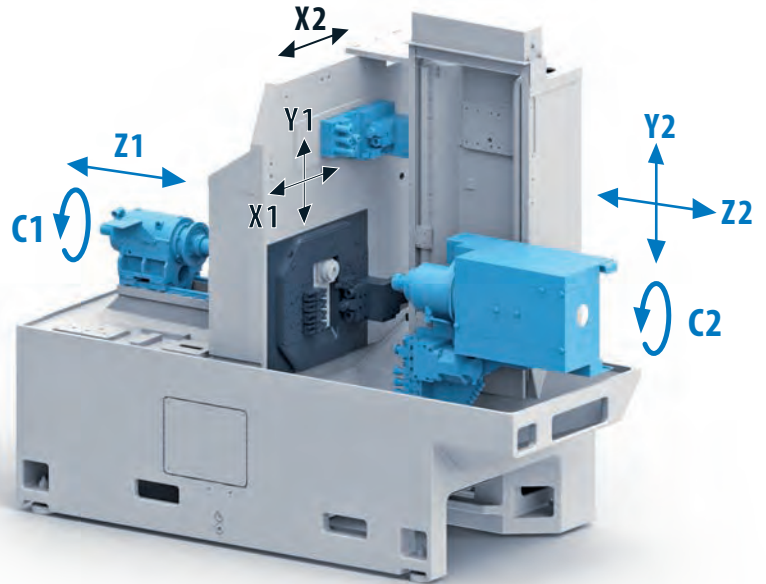
MANURHIN K'MX 632DUO

Aluminium EN AW 6061	Brass CuZn39Pb3	Automatic steel 1.0737	Stainless steel 1.4301
36 sec.	41 sec.	50 sec.	79 sec.

Cycle time is calculated for standard cutting tools, without any special technology, without high pressure coolant and primary with focus on optimal longevity of used cutting tools.

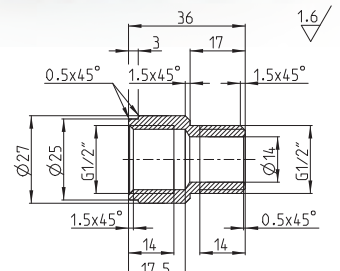
# MANURHIN K'MX 632

Innovative technology



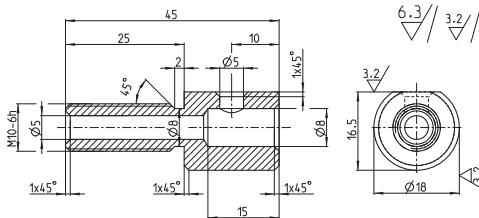
**MANURHIN K'MX 632**

Aluminium EN AW 6061	Brass CuZn39Pb3	Automatic steel 1.0737	Stainless steel 1.4301
19 sec.	20 sec.	23 sec.	35 sec.



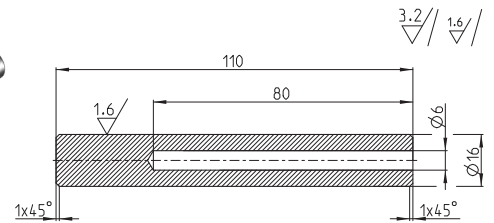
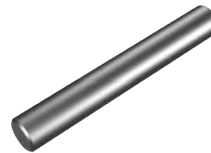
**MANURHIN K'MX 632**

Aluminium EN AW 6061	Brass CuZn39Pb3	Automatic steel 1.0737	Stainless steel 1.4301
42 sec.	49 sec.	54 sec.	73 sec.



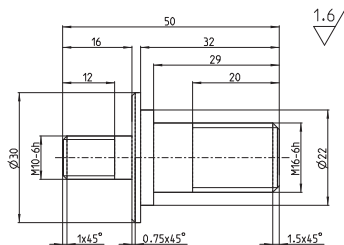
**MANURHIN K'MX 632**

Aluminium EN AW 6061	Brass CuZn39Pb3	Automatic steel 1.0737	Stainless steel 1.4301
32 ec.s	34 sec.	39 sec.	50 sec.



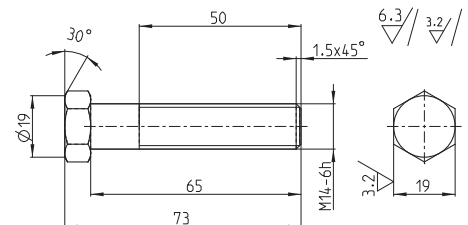
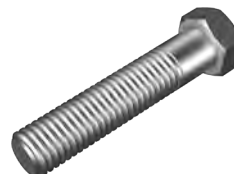
**MANURHIN K'MX 632**

Aluminium EN AW 6061	Brass CuZn39Pb3	Automatic steel 1.0737	Stainless steel 1.4301
34 sec.	35 sec.	41 sec.	61 sec.



**MANURHIN K'MX 632**

Aluminium EN AW 6061	Brass CuZn39Pb3	Automatic steel 1.0737	Stainless steel 1.4301
39 sec.	42 sec.	53 sec.	77 sec.



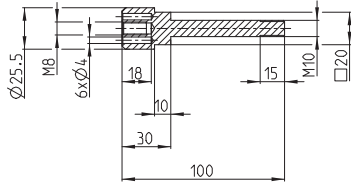
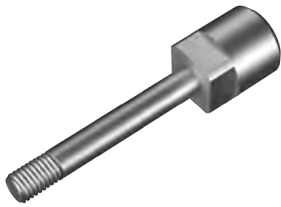
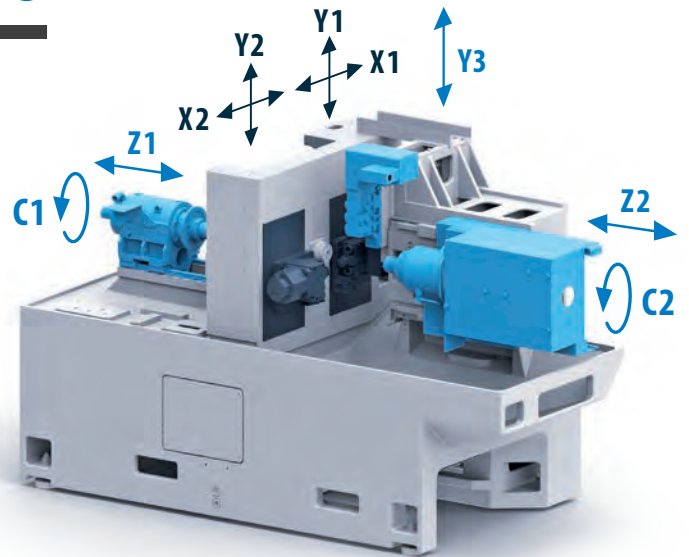
**MANURHIN K'MX 632**

Aluminium EN AW 6061	Brass CuZn39Pb3	Automatic steel 1.0737	Stainless steel 1.4301
43 sec.	46 sec.	54 sec.	77 sec.

Cycle time is calculated for standard cutting tools, without any special technology, without high pressure coolant and primary with focus on optimal longevity of used cutting tools.

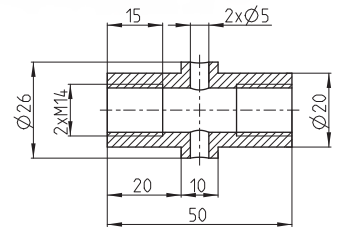
# MANURHIN K'MX 732EVO

Innovative technology



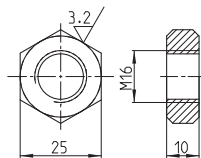
MANURHIN K'MX 732EVO

Aluminium EN AW 6061	Brass CuZn39Pb3	Automatic steel 1.0737	Stainless steel 1.4301
44 sec.	46 sec.	59 sec.	104 sec.



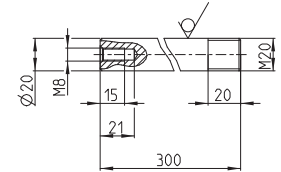
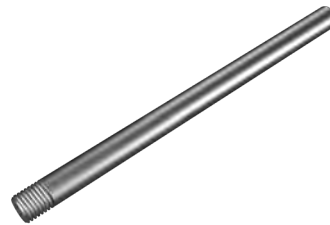
MANURHIN K'MX 732EVO

Aluminium EN AW 6061	Brass CuZn39Pb3	Automatic steel 1.0737	Stainless steel 1.4301
41 sec.	44 sec.	51 sec.	95 sec.



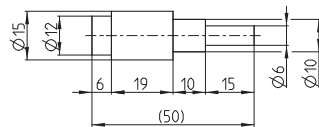
MANURHIN K'MX 732EVO

Aluminium EN AW 6061	Brass CuZn39Pb3	Automatic steel 1.0737	Stainless steel 1.4301
36 sec.	41 sec.	50 sec.	79 sec.



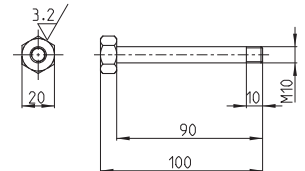
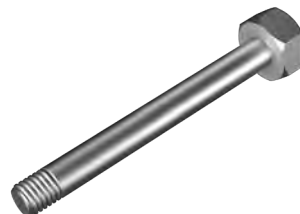
MANURHIN K'MX 732EVO

Aluminium EN AW 6061	Brass CuZn39Pb3	Automatic steel 1.0737	Stainless steel 1.4301
31 sec.	32 sec.	35 sec.	49 sec.



MANURHIN K'MX 732EVO

Aluminium EN AW 6061	Brass CuZn39Pb3	Automatic steel 1.0737	Stainless steel 1.4301
17 sec.	18 sec.	21 sec.	30 sec.



MANURHIN K'MX 732EVO

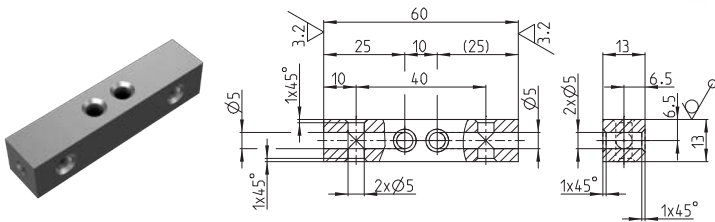
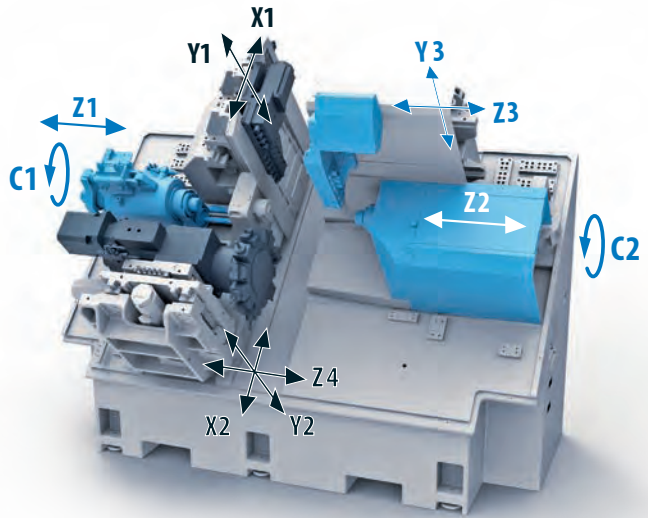
Aluminium EN AW 6061	Brass CuZn39Pb3	Automatic steel 1.0737	Stainless steel 1.4301
48 sec.	51 sec.	67 sec.	100 sec.

Cycle time is calculated for standard cutting tools, without any special technology, without high pressure coolant and primary with focus on optimal longevity of used cutting tools.



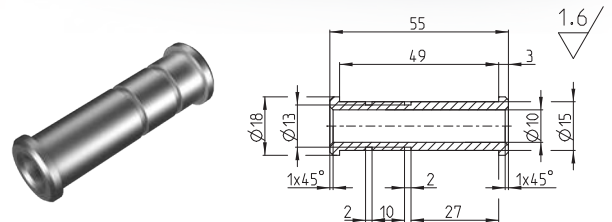
# MANURHIN K'MX 916CLEVER

Innovative technology



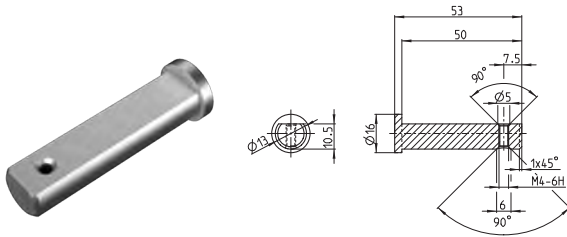
MANURHIN K'MX 916CLEVER

Aluminium EN AW 6061	Brass CuZn39Pb3	Automatic steel 1.0737	Stainless steel 1.4301
24 sec.	25 sec.	29 sec.	47 sec.



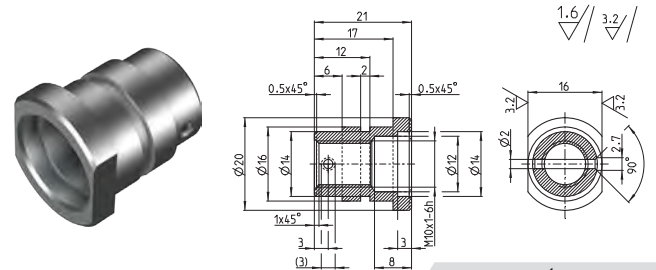
MANURHIN K'MX 916CLEVER

Aluminium EN AW 6061	Brass CuZn39Pb3	Automatic steel 1.0737	Stainless steel 1.4301
19 sec.	22 sec.	27 sec.	48 sec.



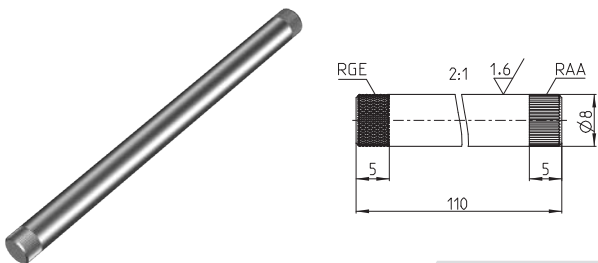
MANURHIN K'MX 916CLEVER

Aluminium EN AW 6061	Brass CuZn39Pb3	Automatic steel 1.0737	Stainless steel 1.4301
25 sec.	30 sec.	41 sec.	59 sec.



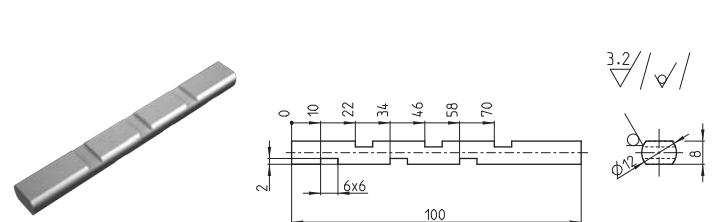
MANURHIN K'MX 916CLEVER

Aluminium EN AW 6061	Brass CuZn39Pb3	Automatic steel 1.0737	Stainless steel 1.4301
29 sec.	30 sec.	35 sec.	56 sec.



MANURHIN K'MX 916CLEVER

Aluminium EN AW 6061	Brass CuZn39Pb3	Automatic steel 1.0737	Stainless steel 1.4301
25 sec.	27 sec.	32 sec.	43 sec.



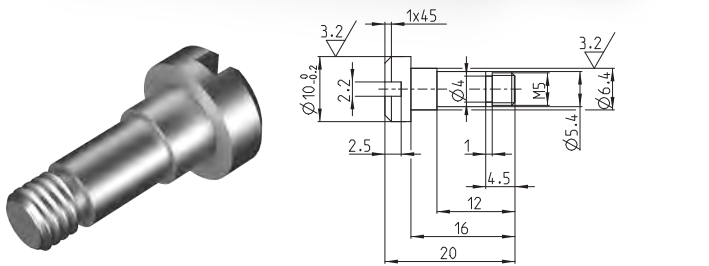
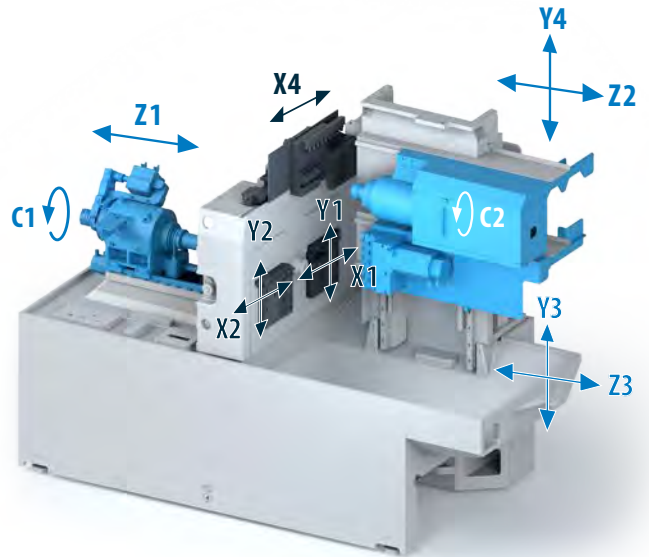
MANURHIN K'MX 916CLEVER

Aluminium EN AW 6061	Brass CuZn39Pb3	Automatic steel 1.0737	Stainless steel 1.4301
38 sec.	39 sec.	42 sec.	81 sec.

Cycle time is calculated for standard cutting tools, without any special technology, without high pressure coolant and primary with focus on optimal longevity of used cutting tools.

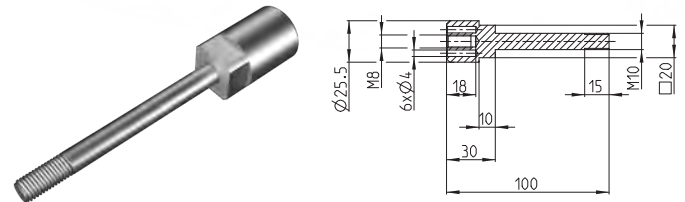
# MANURHIN K'MX 1032

Innovative technology



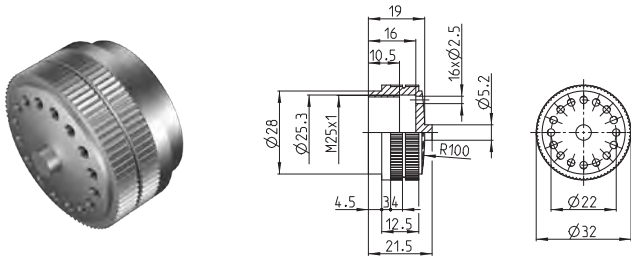
MANURHIN K'MX 1032

Aluminium EN AW 6061	Brass CuZn39Pb3	Automatic steel 1.0737	Stainless steel 1.4301
29 sec.	30 sec.	33 sec.	44 sec.



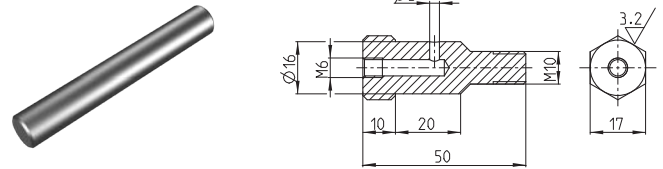
MANURHIN K'MX 1032

Aluminium EN AW 6061	Brass CuZn39Pb3	Automatic steel 1.0737	Stainless steel 1.4301
44 sec.	46 sec.	59 sec.	104 sec.



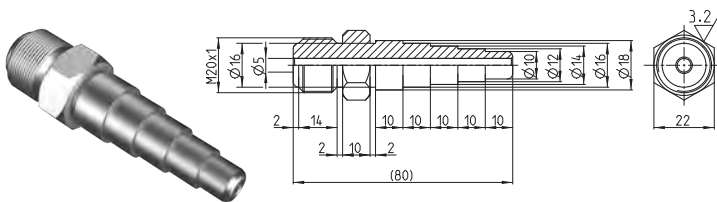
MANURHIN K'MX 1032

Aluminium EN AW 6061	Brass CuZn39Pb3	Automatic steel 1.0737	Stainless steel 1.4301
83 sec.	89 sec.	126 sec.	171 sec.



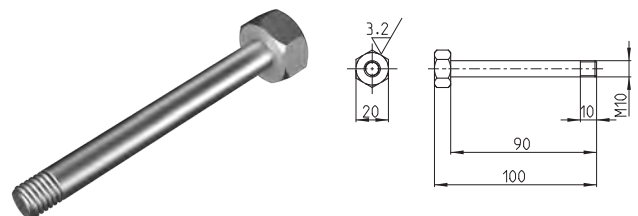
MANURHIN K'MX 1032

Aluminium EN AW 6061	Brass CuZn39Pb3	Automatic steel 1.0737	Stainless steel 1.4301
38 sec.	39 sec.	47 sec.	74 sec.



MANURHIN K'MX 1032

Aluminium EN AW 6061	Brass CuZn39Pb3	Automatic steel 1.0737	Stainless steel 1.4301
44 sec.	49 sec.	61 sec.	100 sec.



MANURHIN K'MX 1032

Aluminium EN AW 6061	Brass CuZn39Pb3	Automatic steel 1.0737	Stainless steel 1.4301
41 sec.	44 sec.	50 sec.	80 sec.

Cycle time is calculated for standard cutting tools, without any special technology, without high pressure coolant and primary with focus on optimal longevity of used cutting tools.